

TAG RACING INTERNATIONAL™

Manufacturer Address
PRD TAIWAN
6F, No16 Nanking East
Road, Section 5, Taipei TW

Engine # TAGUSA

Manufacturer :	PRO RACING DESIGN
Make:	PRD
Model :	FIREBALL RK125WC.07-08
Inlet type:	REED
Number of pages	

PICTURE OF ENGINE

(insert picture of front/left here)



(insert picture of back/right here)



Signature and Stamp

Blank area for signature and stamp.

Importer	
----------	--

TECHNICAL INFORMATION

A	CHARACTERISTICS	
	Measurement	Tolerances
Volume of cylinder	122.25 cc	125 cc
Original bore	53.60 mm	
Theoretical maximum bore	54.25 mm	
Stroke	54 mm	
Cooling system	WATER COOLED	
Number of carburation systems	Tillotson (HL-360A) ONE ONLY	
Number of transfer ports / ducts, cylinder / sump	3	
Number of exhaust ports / ducts	3	
Shape of the combustion chamber	SPHERICAL WITH SQUISH	
Length between axes of the connecting rod	100 mm	
Minimum weight of connecting rod	120 g	
Volume of combustion chamber	10cc min	
Type of bearings and size	<i>Example 6205 type</i> Big End of Con. Rod Bearing = 18 X 24 X 14.8 Little End of Con. Rod Bearing = 14 X 18 X 17.2 Crankshaft Bearing = 25 X 52 X 15	

B	OPENING ANGLES	
Exhaust	174 MAX	
Of exhaust ports / ducts	174 MAX	

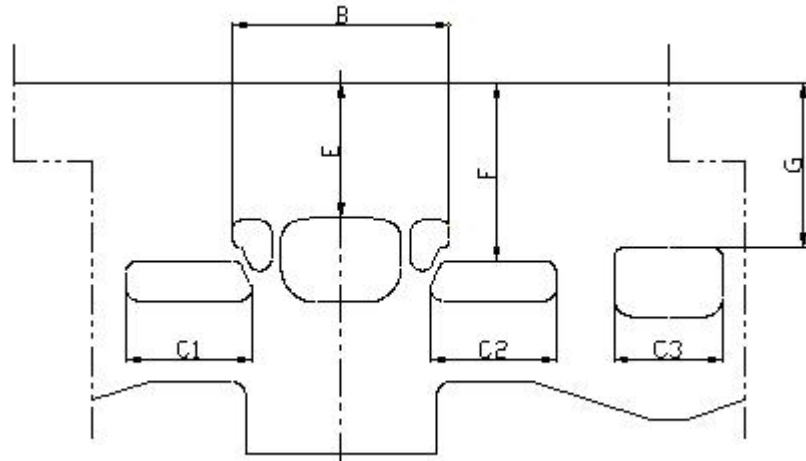
C	LIST OF ACCESSORIES INCLUDED	
<i>(List accessories as shown below)</i>	<i>Centrifugal clutch</i>	
<i>Carburetor with butterfly Ø27</i>		
<i>Electric starter</i>		
<i>Exhaust with flex</i>		

D	MATERIAL	
Cylinder	Alloy	
Connecting rod	STEEL	
Crankshaft	STEEL	
Head	ALLOY	
Liner	CAST IRON	
Crankcase	ALLOY	
Piston	ALLOY	
Piston Ring	CAST IRON CHROME PLATED	

DRAWING OF THE CYLINDER DEVELOPMENT

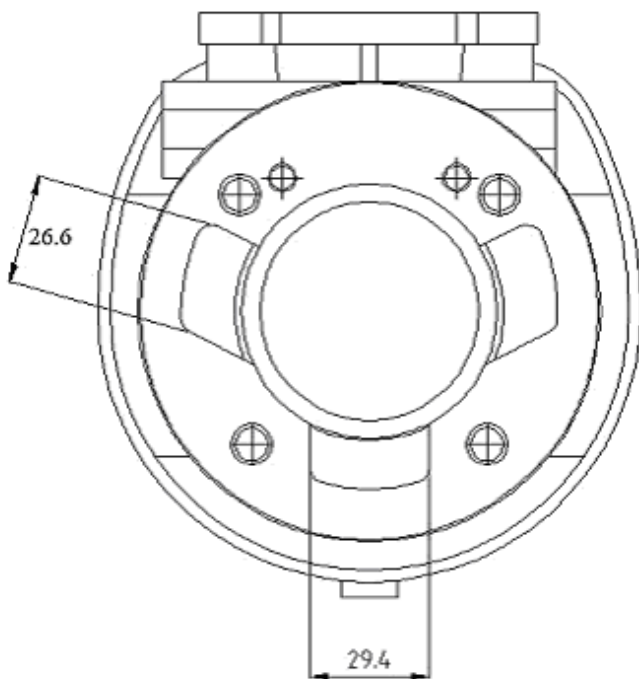
(Insert drawing here)

Chord reading	
B	65.3
C1=C2	26
C3	29.4
Angular reading by inserting a 0.2mm gauge	
E	33.8 min
F	44
G	43.5



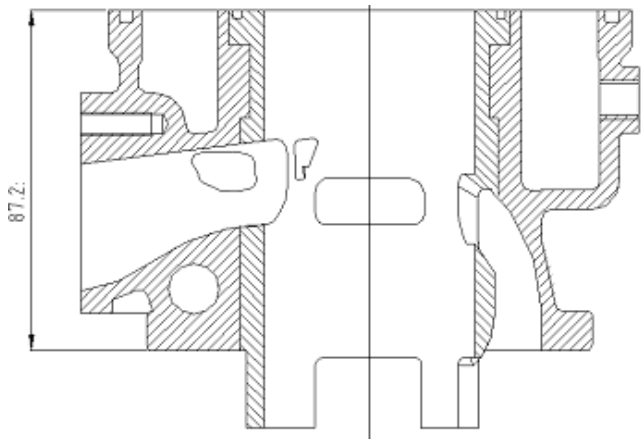
DRAWING OF THE CYLINDER BASE

(Insert drawing here)



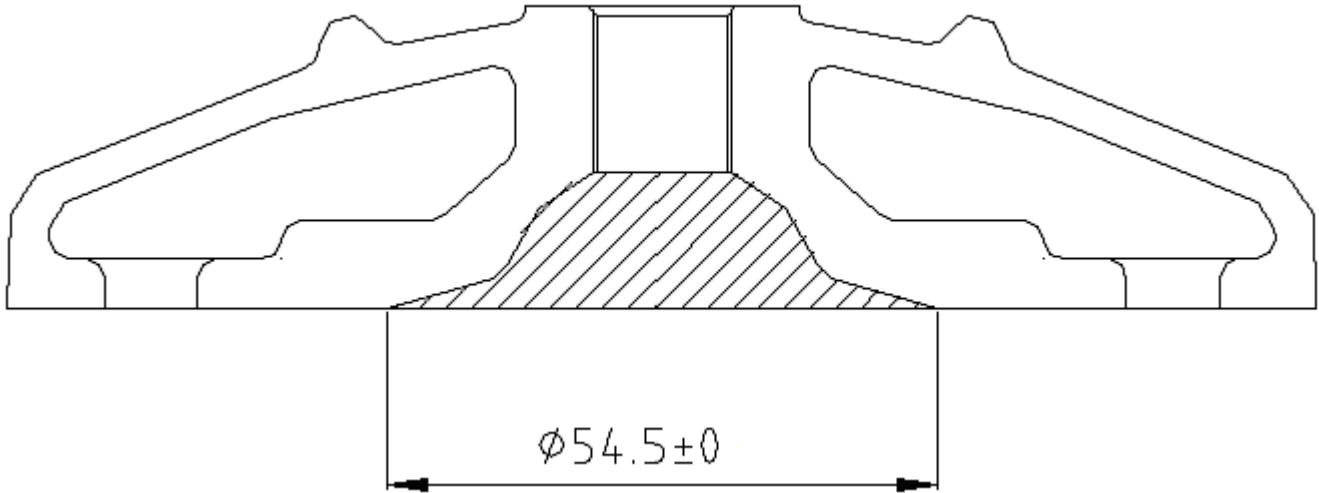
CYLINDER SECTION VIEW

(Insert drawing here)



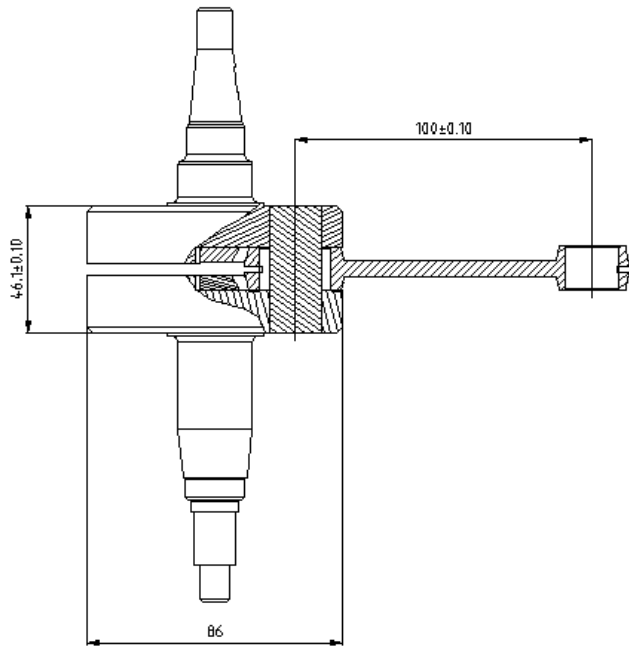
DRAWING OF THE CYLINDER HEAD AND THE COMBUSTION CHAMBER

(Insert drawing here)



DRAWING OF THE CRANKSHAFT

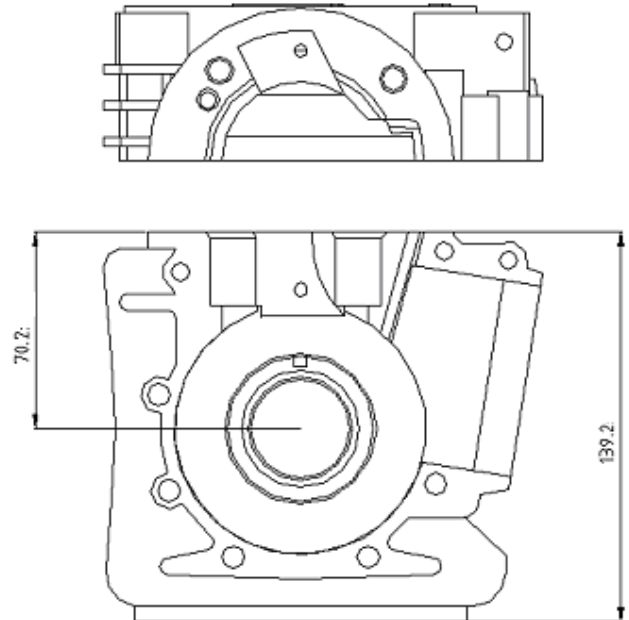
(Insert drawing here)





Complete weight = **1900 GRMS**

DRAWING OF THE INSIDE OF SUMP

(Insert drawing here)



TAGUSA

IGNITION	
Manufacturer	OPPAMA
Model Number	PRD/OPPAMA/2004 -
Rotation	A/CLOCKWISE
Description	CDI
PHOTO OF IGNITION	PHOTO OF COIL
<i>(insert photo of inside here)</i>	<i>(Insert photo here)</i>
	
OPPAMA ROTOR	OPPAMA COIL

TAGUSA

IGNITION	
Manufacturer	
Model Number	
Rotation	
Description	
PHOTO OF IGNITION	PHOTO OF COIL
INTAKE	
Manufacturer	
Model Number	
Rotation	
Description	
PHOTO OF REED ASSEMBLY	PHOTO OF REED PETAL

(insert photo of inside here)



(Insert photo here)



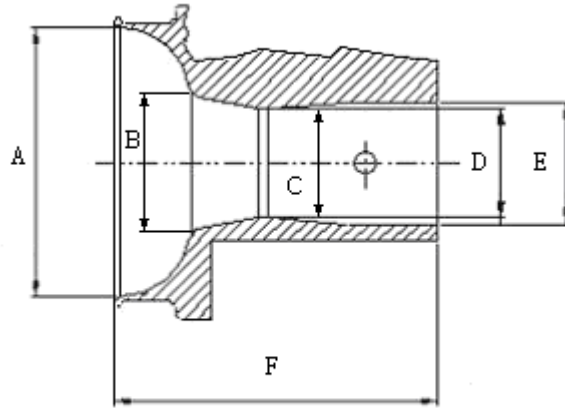
(insert photo of outside here)



CARBURETOR DIMENSION

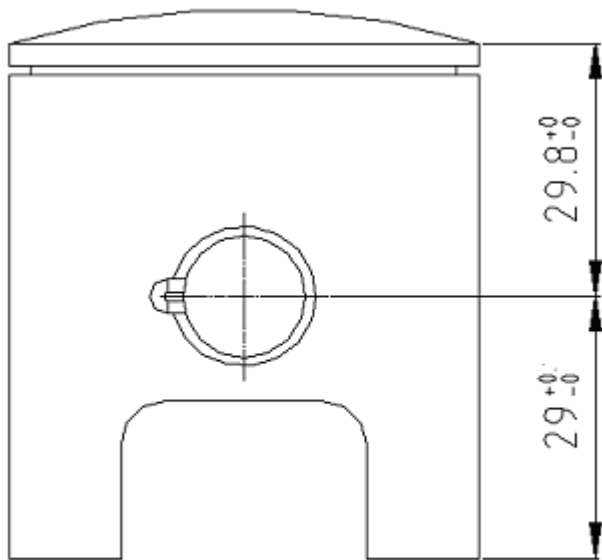
(Insert drawing here)

Item	Measure	Tolerance
A	33.75mm	±0.20mm
B	-----	-----
C	24mm	±0.10mm
D	24mm	±0.10mm
E	27mm	±0.10mm
F	66.25mm	±0.10mm



PISTON

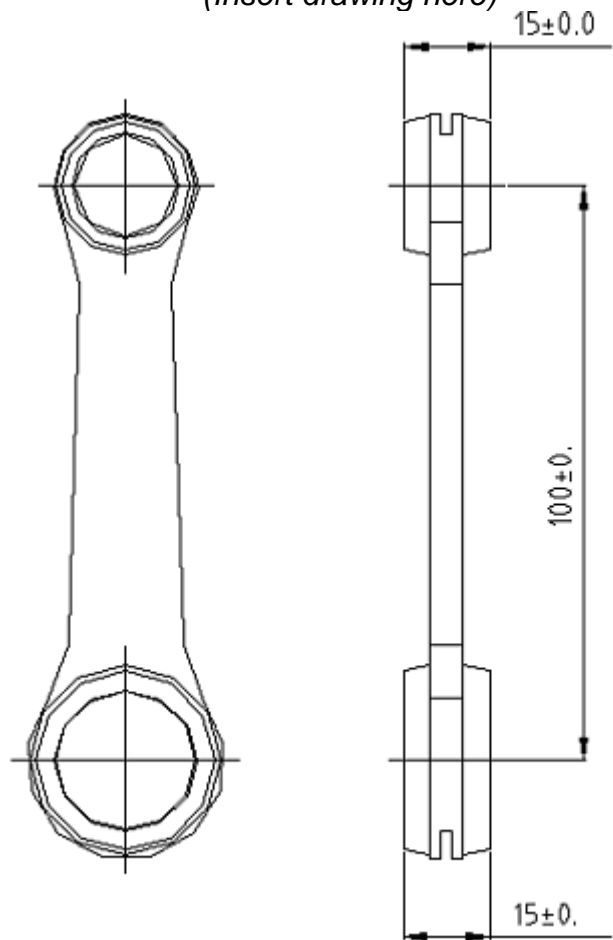
(Insert drawing here)



Weight= 135

CONNECTING ROD

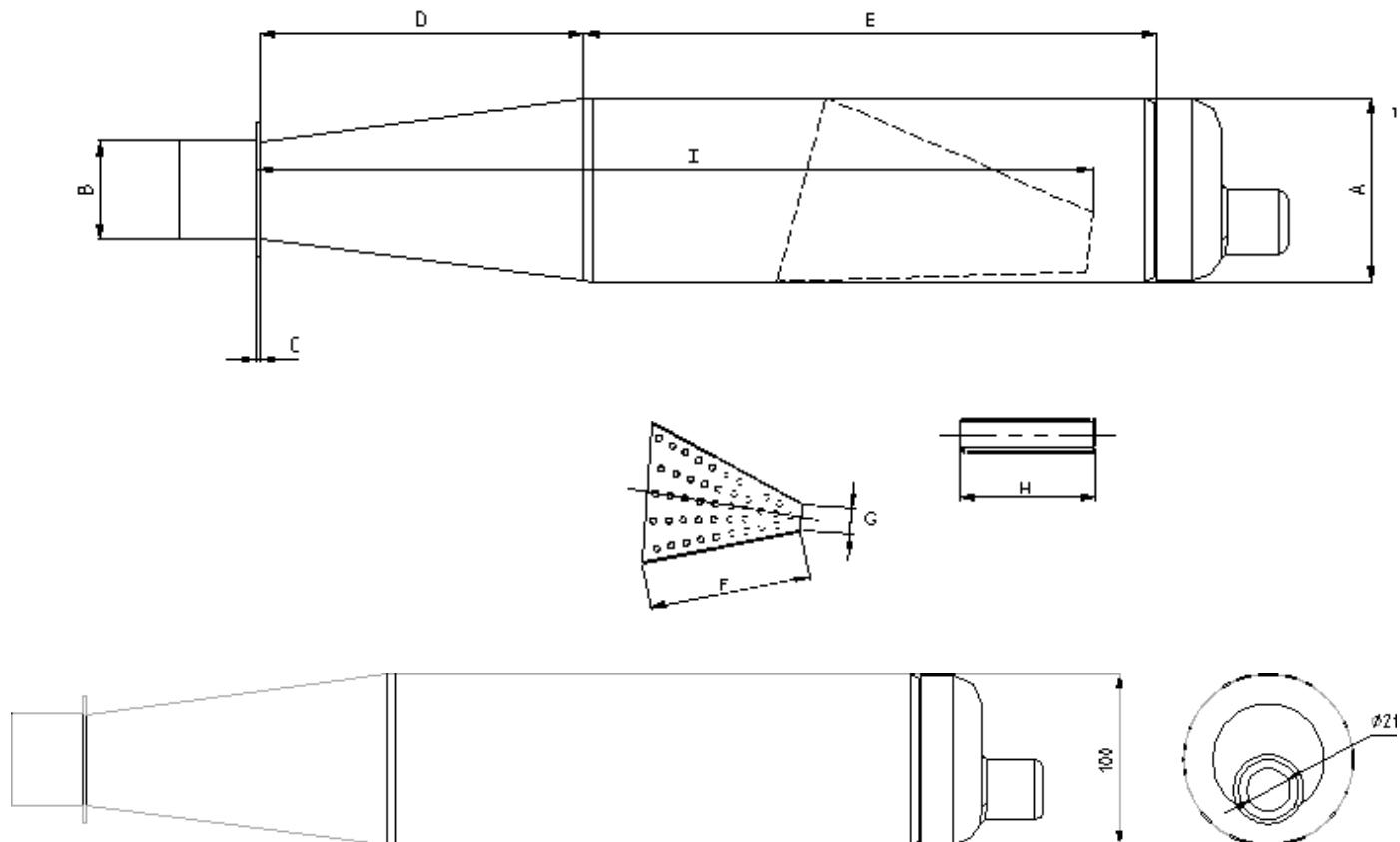
(Insert drawing here)



Weight= 120

DRAWING OF THE SILENCER AND IT'S COMPONENTS

(Insert drawing here)

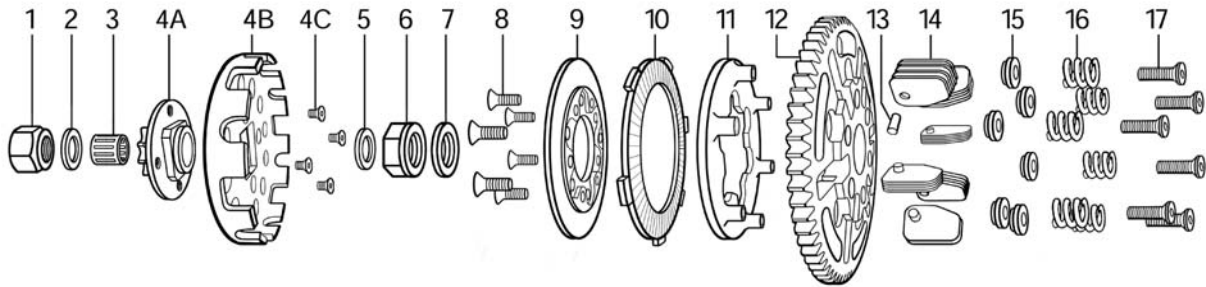


The end parts of the silencer must have two soldered pairs of lugs (one pair at the top and one pair at the bottom) to allow for fixing of seals by the Organizer so that the silencer may be opened during the competition

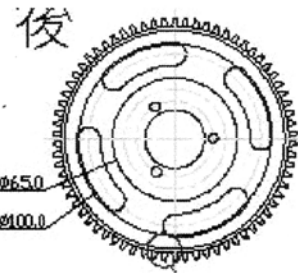
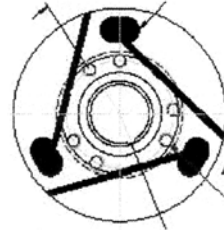
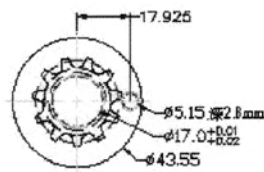
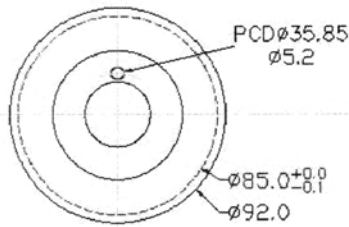
Measurements:

- A: **100mm**
- B: **54mm**
- C: **3mm**
- D: **170mm**
- E: **315mm**
- F: **170mm**
- G: **21mm**
- H: **135mm**
- I: **455m**

DRAWING OF THE CLUTCH



HORSTMAN CLUTCH



PRD ONE PIECE CLUTCH