

TAG™ Engine Specification Form

125cc TAG Engine

Manufacturer Address

Motri Seven

Via Perticara 130

47023 Cesena (fc) Italy

TAG™ Engine #

Manufacturer Motri Seven	
Make	
Model Tag L4 JUNIOR	
Inlet type Carburator Dell'orto ø 30	
Number of pages 10	

PICTURE OF ENGINE

(insert picture of front/left here)

(insert picture of back/right here)



Official TAG™ Signature and Stamp

--

Importer	MIKE MANNING KARTING 3351 75 th Street West Rosamund CA 93560
----------	---



TECHNICAL INFORMATION

A	CHARACTERISTICS	
	Measurement	Tolerances
Volume of cylinder	124.58 cm ³	125 cm ³
Original bore	54.00 mm	
Theoretical maximum bore	54.08 mm	
Stroke	54.40 mm	
Cooling system	Water cooled	
Number of carburation systems	1	
Number of transfer ports / ducts, cylinder / sump	5	
Number of exhaust ports / ducts	1	
Shape of the combustion chamber	Spherical – with squish	
Length between axes of the connecting rod	110	
Minimum weight of connecting rod		+/- 0.1 mm
Volume of combustion chamber	9	
Type of bearings and size	<i>(example) 6205 type</i> Big End of Con. Rod Bearing = 20 X 26 X 15 Little End of Con. Rod Bearing = 15 X 19 X 20 Crankshaft Bearing = 25 X 52 X 15	

B	OPENING ANGLES	
Exhaust	182	
Of exhaust ports / ducts	128-135	

C	LIST OF ACCESSORIES INCLUDED	
<i>(List accessories as shown below)</i>	<i>Centrifugal clutch</i>	YES
<i>Carburetor dell'orto Ø30</i>		
<i>Generator for battery charging</i>	NO	
<i>Electric starter</i>	YES	
<i>Exhaust with flex</i>	NO	

D	MATERIAL	
Cylinder	<i>Aluminium AL-SI</i>	
Connecting rod	<i>Steel Ni cr mo</i>	
Crankshaft	<i>Steel Ni cr mo</i>	
Head	<i>Aluminium AL-SI</i>	
Liner	<i>Aluminium + nicasil</i>	
Crankcase	<i>Aluminium AL-SI</i>	
Piston	<i>Aluminium AL-SI</i>	
Piston Ring		



DRAWING OF THE CYLINDER DEVELOPMENT

(Insert drawing here)

Chord reading

$B = 39.$

$C1 = 21.7$

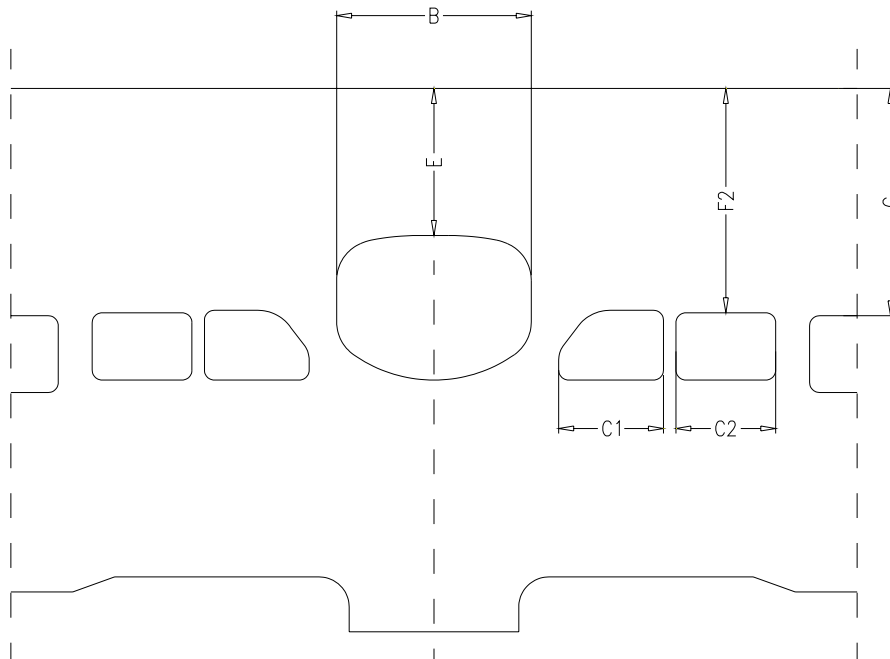
$C2 = 21.7$

Angular reading by inserting a 0.2mm gauge

$E = 33.2$

$F = 44.3$

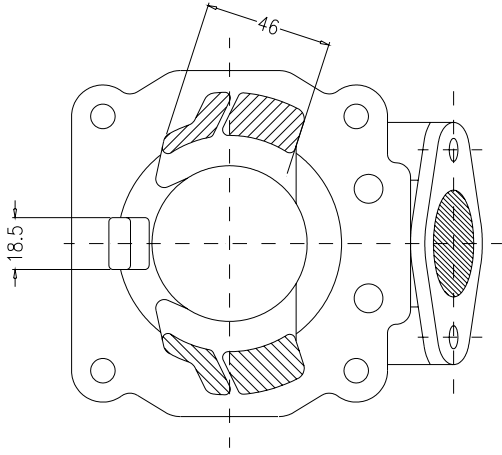
$G = 44.3$



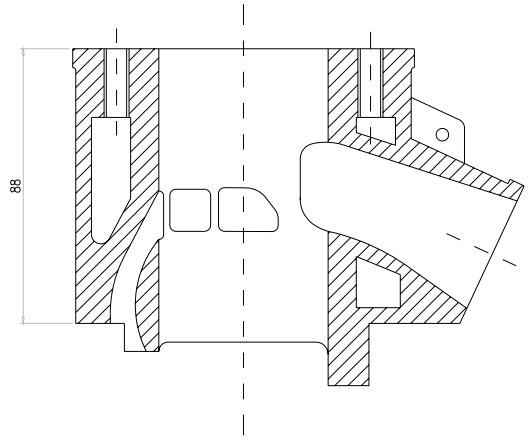
DRAWING OF THE CYLINDER BASE

CYLINDER SECTION VIEW

(Insert drawing here)



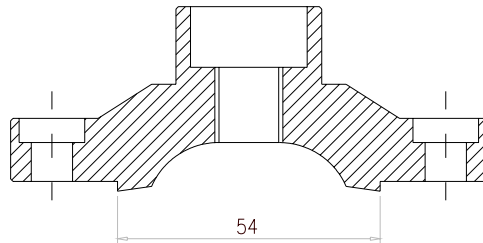
(Insert drawing here)





DRAWING OF THE CYLINDER HEAD AND THE COMBUSTION CHAMBER

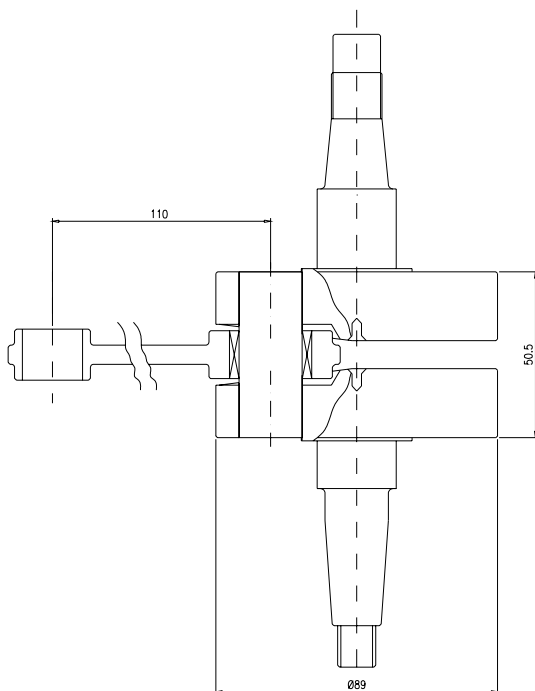
(Insert drawing here)



Combustion chamber volume = 9 c.c. minimum

DRAWING OF THE CRANKSHAFT

(Insert drawing here)





DRAWING OF THE INSIDE OF SUMP

(Insert drawing here)



Complete weight = Kg 2,230 Tolerance= ± gr100



IGNITION	
Manufacturer Selettra o PVL	
Model Number 06000160	
Rotation P 3356	
Description	
PHOTO OF IGNITION	PHOTO OF COIL
<p><i>(insert photo of inside here)</i></p> 	<p><i>(Insert photo here)</i></p> 



CARBURETOR DIMENSION

(Insert drawing here)

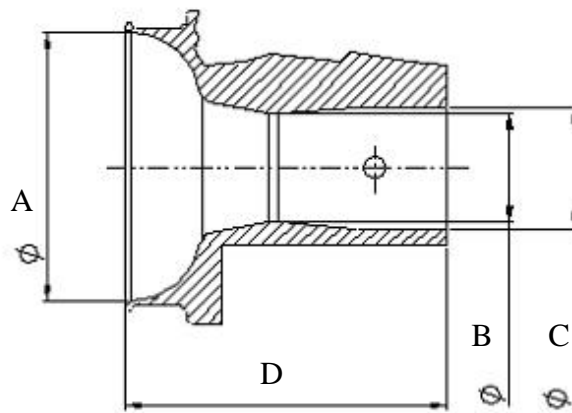
**Item
Measure
Tolerance**

A = 58,5

B = 30

C = 30

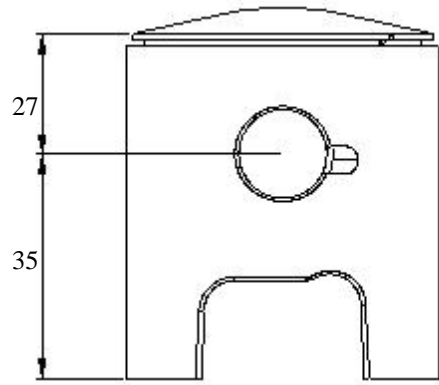
D = 88.5



PISTON

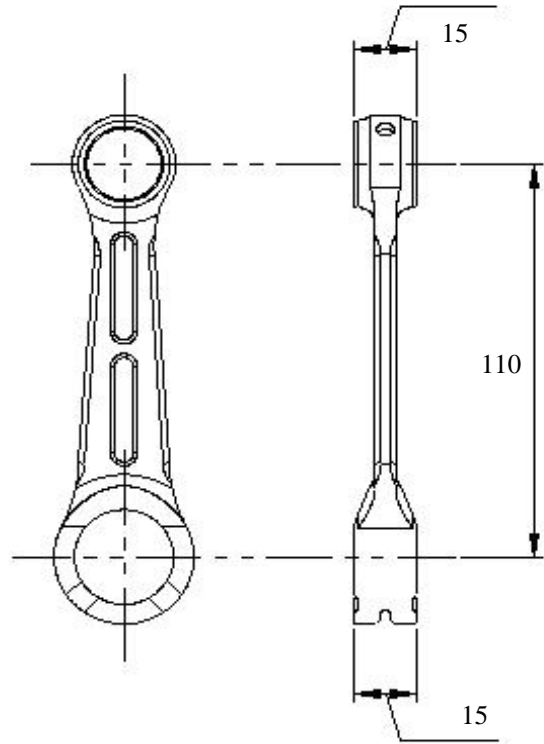
CONNECTING ROD

(Insert drawing here)



Weight= 116 gr Tolerance= ± 5 gr

(Insert drawing here)

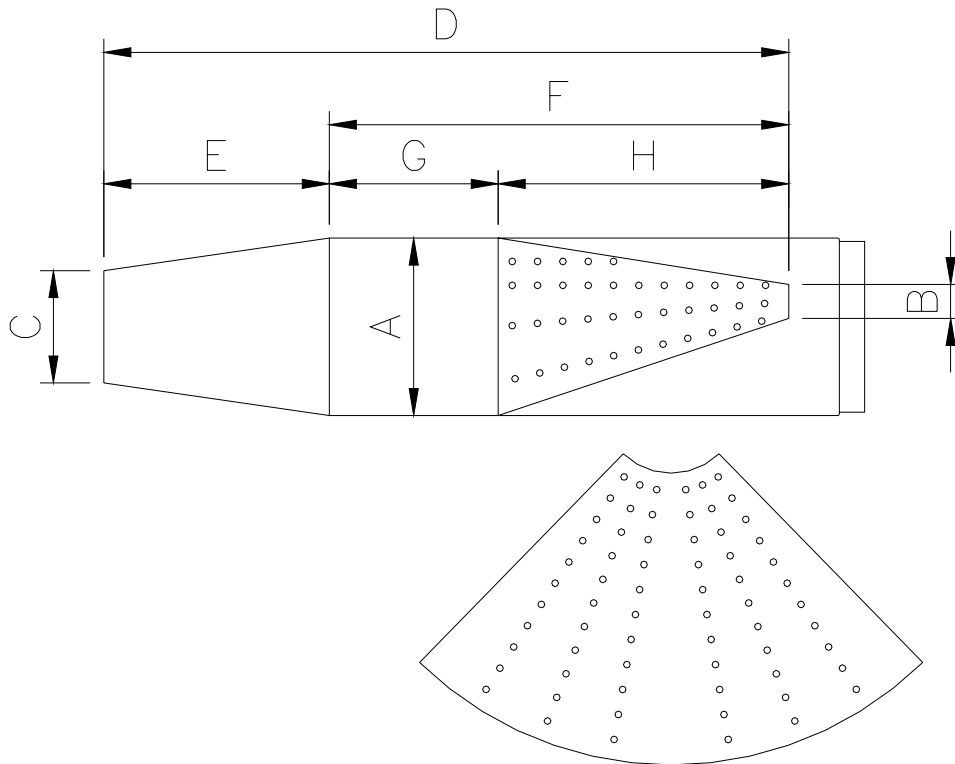


Weight= 120 gr Tolerance= ± 10 gr



DRAWING OF THE SILENCER AND IT'S COMPONENTS

(Insert drawing here)



The end parts of the silencer must have two soldered pairs of lugs (one pair at the top and one pair at the bottom) to allow for fixing of seals by the Organizer so that the silencer may be opened during the competition

Measurements:

- A: 105
- B: 20
- C: 66.5
- D: 405.5
- E: 133.5
- F: 272
- G: 100
- H: 172

DRAWING OF THE CLUTCH

(Insert drawing of clutch used)

Item
Weight
Tolerance

A = 127

B = 105.5

C = 114

